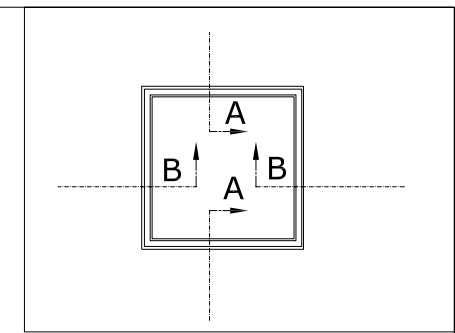
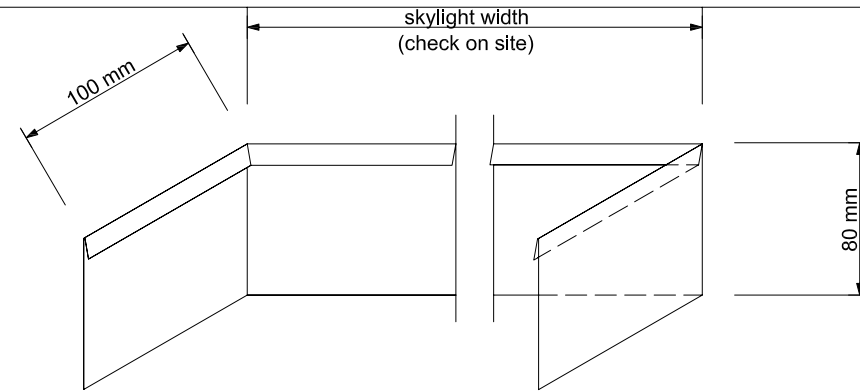


VELUX VS & VSE Venting Skylight installation guidelines for roofs with roof pitch less than 15 degrees

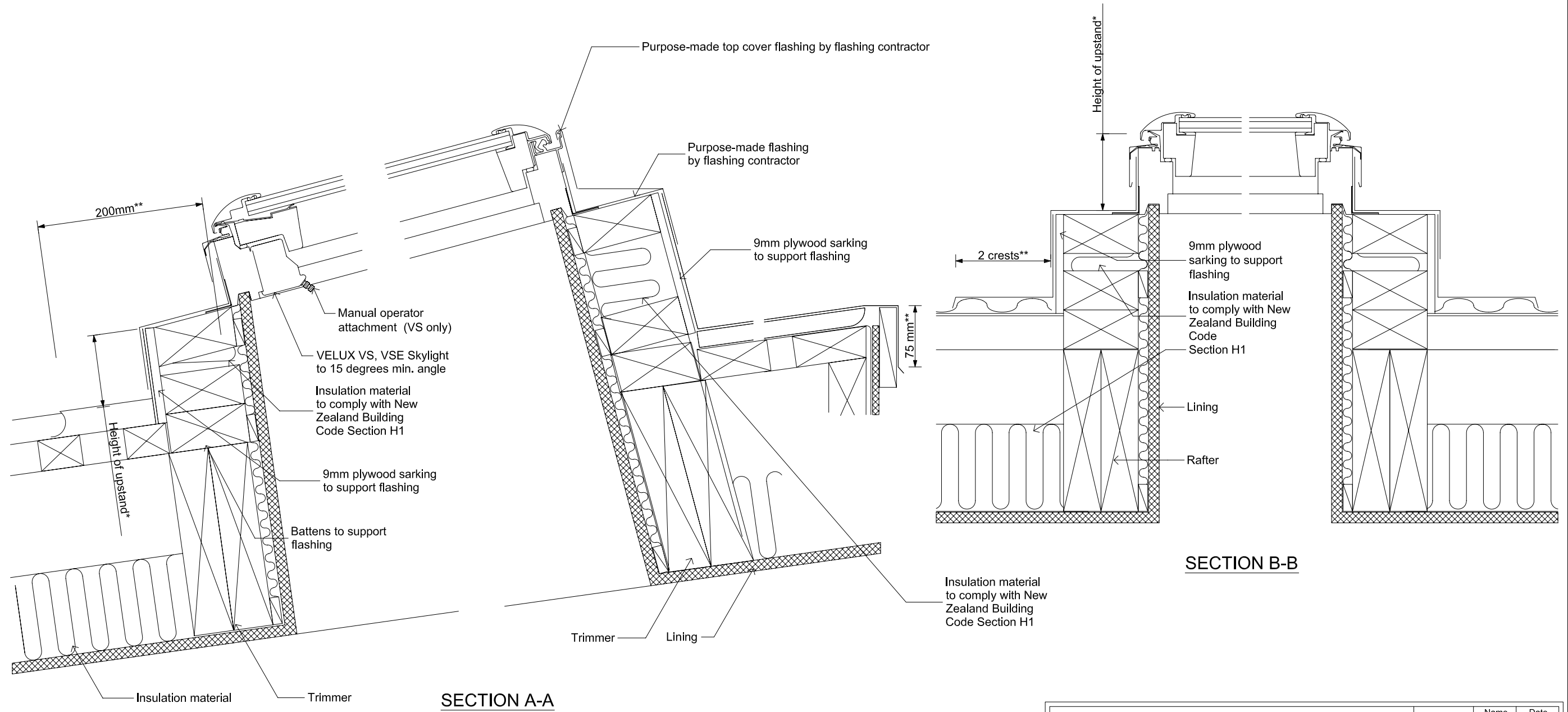
For roofs with roof pitches less than 15 degrees, the VELUX VS & VSE Venting Skylight must be installed to a min.15 degrees.

A purpose made flashing designed to meet the conditions set out in Section E2 of the New Zealand Building Code shall be manufactured and installed by a specialist flashing contractor. This flashing must be guaranteed against weather-tightness by the specialist flashing contractor.

Insulation material meeting the requirements of NZBC/H1 is required in the cavities of the lightwell structure.



ELEVATION



SECTION A-A

SECTION B-B

INSTALLATION GUIDELINES - VS, VSE VENTING SKYLIGHT IN METAL ROOFS (PITCH < 15 DEGREES)

This drawing is an instrument of service and is provided for informational use only.

VELUX Sky-Product Management	NEW ZEALAND LTD. 0800 650 445		Name	Date
	Drawn by		Dec. 09	
	Checked by		Dec. 09	
	Drawing No.			
VS, VSE - Venting Skylight in Metal Roof (pitch <15 degrees)				