

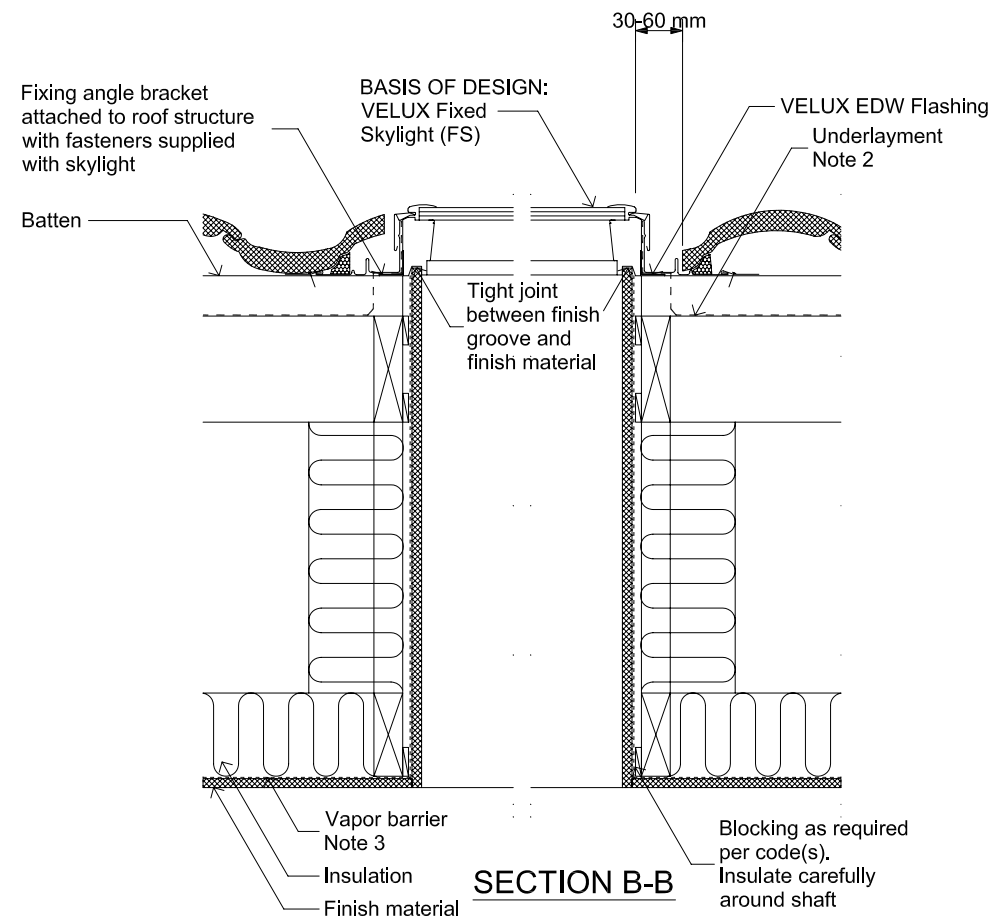
ELEVATION

NOTES

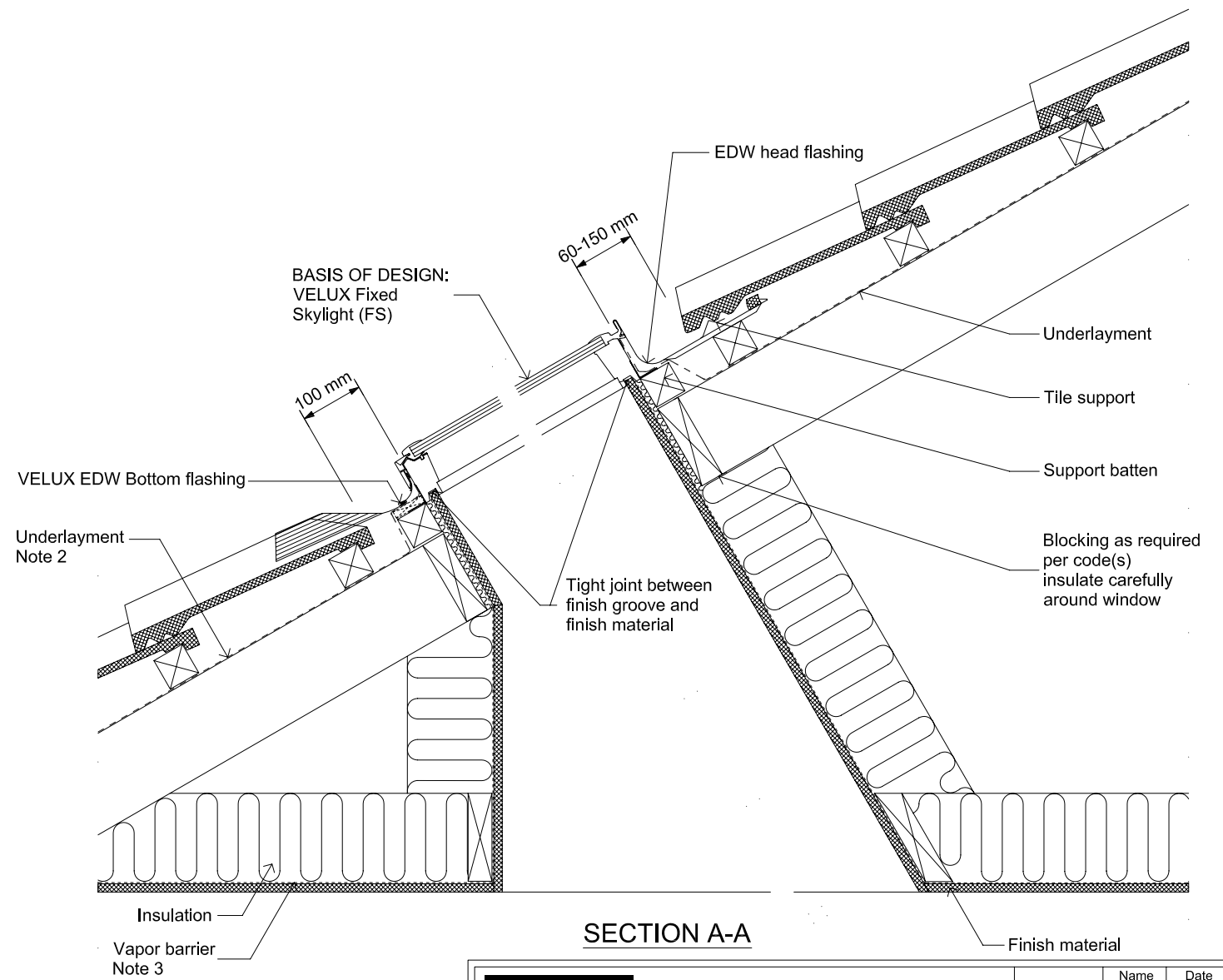
1. Fix the flashing pieces to the frame and roof/battens.
2. Underlayment to be folded up against all sides of skylight.
3. Vapor barrier should be used to avoid moisture.
4. The emphasis of this drawing is to illustrate a light shaft construction method. While a VELUX FS model skylight & concrete tile roof are shown, the light shaft construction is applicable to other VELUX model skylights and roof types.

Support batten

	Light shaft
	FS
	EDW
	Concrete Tiles
	15°-90°



SECTION B-B



SECTION A-A

VELUX Sky-Product Management	NEW ZEALAND LTD. 0800 650 445	Name	Date
		Drawn by	Oct 09
Typical Detail - Lightshaft Construction		Checked by	Oct 09
		Drawing No.	

This drawing is an instrument of service and is provided for informational use only.

© 2009 VELUX GROUP

© VELUX is a registered trademark