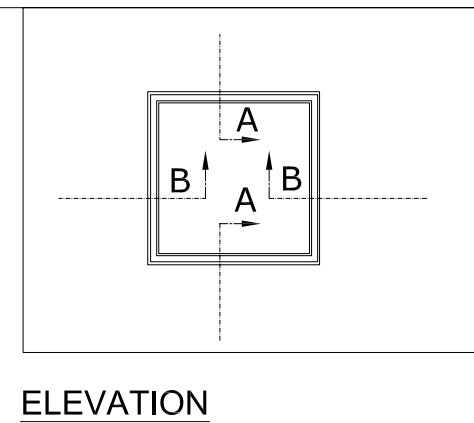
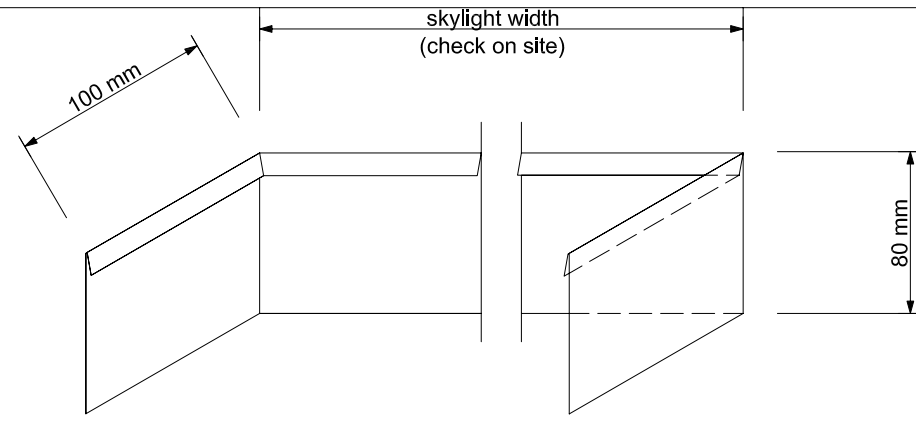
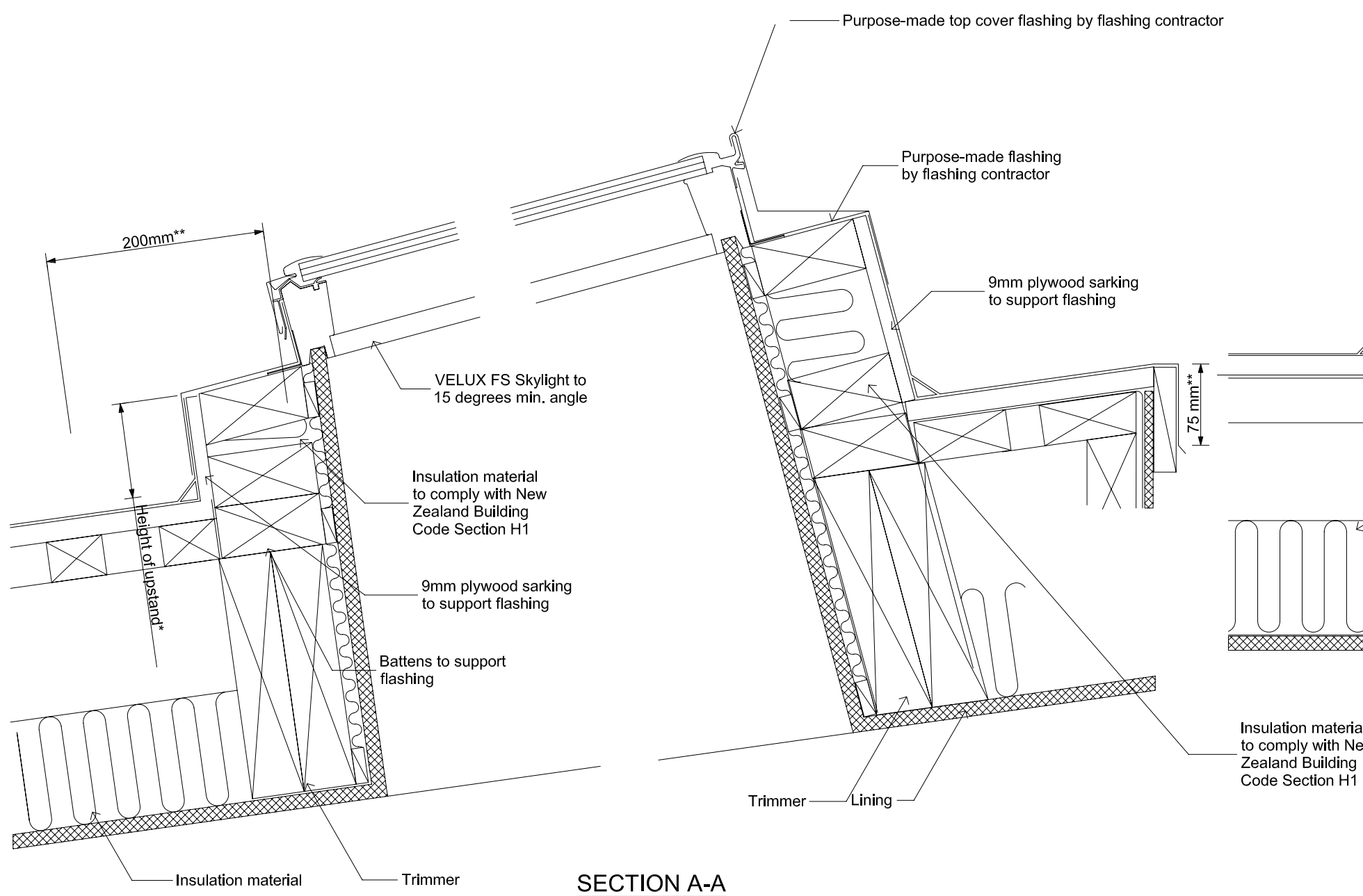


**VELUX FS Fixed Skylight installation guidelines for roofs with roof pitch less than 15 degrees**

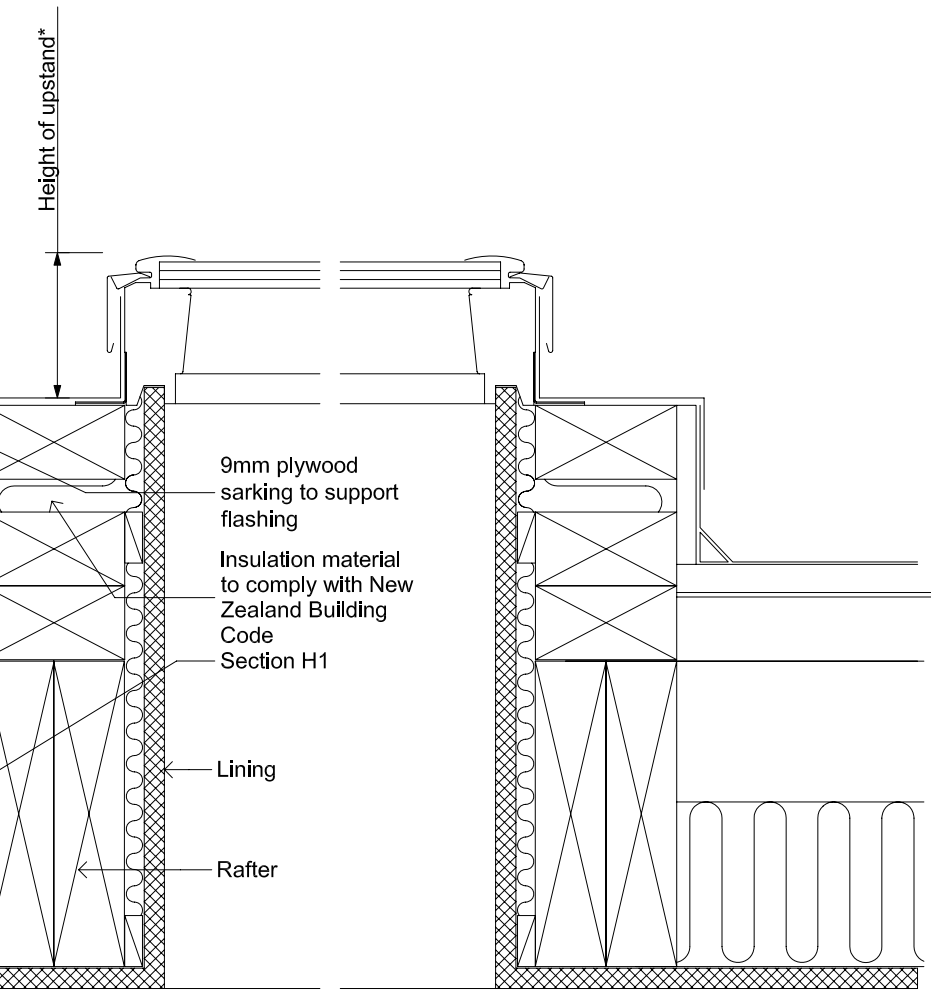
For roofs with roof pitches less than 15 degrees, the VELUX FS Fixed Skylight must be installed to a min. 15 degrees.  
 A purpose made flashing designed to meet the conditions set out in Section E2 of the New Zealand Building Code shall be manufactured and installed by a specialist flashing contractor. This flashing must be guaranteed against weather-tightness by the specialist flashing contractor.  
 Insulation material meeting the requirements of NZBC/H1 is required in the cavities of the lightwell structure.



**ELEVATION**



**SECTION A-A**



**SECTION B-B**

**SUGGESTED INSTALLATION - FS FIXED SKYLIGHT IN MEMBRANE ROOFS (PITCH < 15 DEGREES)**

	<b>NEW ZEALAND LTD.</b> 0800 650 445 Sky-Product Management		Name Date
	Drawn by	Checked by	Oct 09 Oct 09
	Drawing No.		FS - Fixed Skylight in Membrane Roof (pitch <15 degrees)
	This drawing is an instrument of service and is provided for informational use only.		